

# CHECK IT OUT

November 2025

Issue #6

“Manawatū Community Hub Libraries (MCHL) provides services at Te Āhuru Mōwai and satellite locations for the community and visitors.

## Welcome | Haere mai

Welcome to the sixth edition of Check It Out, the bi-monthly newsletter from Manawatū Community Hub Libraries. In this edition, discover the new Library of Things, how to host parties at Te Āhuru Mōwai, and our upcoming Christmas workshops. You will also find details about free Digi-Coach tech help, Community Libraries, Heritage resources, the Homelink Delivery service, and our Paws Up for Reading programme. So read on and check it out!

### Festive Season Hours:

**December 22–24:** Open from 9:30 AM to 5:30 PM

**December 25–28:** Closed (Open Plus Access)

**December 29–31:** Open from 9:30 AM to 5:30 PM

**January 1–4:** Closed (Open Plus Access)



## Cosplay Prop Showcase

Now showcased in the library is a striking replica prop sword, meticulously 3D printed in 15 separate pieces and assembled by fitting each section onto two hollow acrylic tubes containing an LED strip. The lights can be conveniently controlled with a remote. This imaginative prop created in the Makerspace was designed by ravencosplay and can be found on Thingiverse.com.

**Do you have a cosplay project in mind?** Reach out to the Makerspace team to discover how we can assist you.

To learn more visit:  
[www.mchl.co.nz/makerspace](http://www.mchl.co.nz/makerspace)

 makerspace



## New! Library of Things

Ever dreamed of strumming a guitar, tinkering with a sewing machine, or finally trying an eBook reader without buying one? You can now borrow more than stories from the Manawatū Community Hub Libraries (MCHL). The Library of Things is a collection that lets you check out portable CD players, telescopes, and robots to ukuleles and children's activity kits.

All these items are free to borrow for two weeks, with renewals available. "Our collection is evolving to be much more than books," says Warrick Taylor, Library Services Leader. "This gives people the chance to try something new, refresh an old skill, or simply borrow what they need without the expense of buying." By encouraging borrowing instead of ownership, the Library of Things supports sustainability, creativity, and community connection. It also helps reduce waste, lowering costs, and opening the door to new hobbies and shared experiences. **This exciting new collection is found near the children's area in the library. Come and discover something new!**

**View the full story online by visiting:**  
<https://www.mchl.co.nz/your-mchl/latest-news/2024/2025/new!-library-of-things>





## Parties at Te Āhuru Mōwai

Celebrate your next birthday, special occasion, or fun get-together at Te Āhuru Mōwai. Enjoy a two-hour booking in one of our meeting rooms create your own experience or let the MCHL team take your celebration to the next level with a staff-led activity. From VR adventures and craft workshops to Just Dance battles and soft play for the little ones, there is something for everyone. Yes, even adults!

Find out more and book your celebration on the MCHL website.

<https://www.mchl.co.nz/your-mchl/parties>



## What's On Spotlight



**Christmas Wreath Workshop Cost: \$85**

**Friday, 28 November**

**6:00pm–8:00pm**

Christmas Wreath Workshop with Sara from Garden Flowers by Sara. Create a rustic, modern wreath using dried florals and foliage.

**Glass Fusion Workshop – Christmas Ornament Cost: \$30**

**Saturday, 6 December**

**1.00pm–3.00pm**

Serena from 3D Glass Art will teach the basics of glass fusion and you will create two small ornaments.

**Gingerbread House Decorating Cost: \$60 per ticket (1 or 2 people)**

**Friday, 12 December**

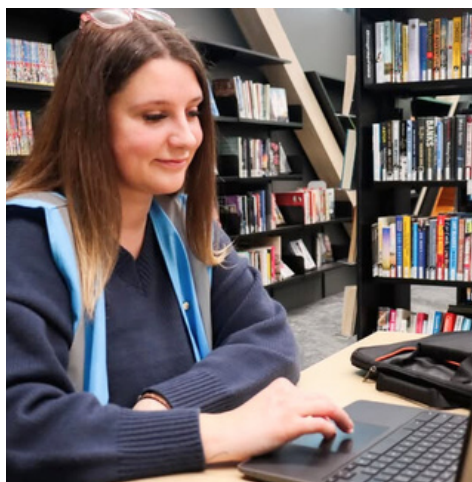
**6:00pm–8:00pm**

An evening of creativity and Christmas cheer with the team from Master of Gingerbread. Decorate a medium-sized gingerbread house with icing, lollies, and treats.

**Embroidery Christmas Stocking Workshop Cost: \$35**

**Saturday, 13 December 2:00pm–4:00pm**

Lilly from LSEmbroidery will teach you the art of embroidering a special name onto a beautiful knitted Christmas stocking.



## Need Tech Help? Meet Your Digi-Coach

A Digi-Coach is available at the library offering free, friendly help with all things digital. Feilding local Briar Mills, who has a master's degree in psychology, is passionate about helping people build confidence with technology and can also assist with Skinny Jump sign-ups and other digital skills.

She is available **Monday to Friday from 10am to 2pm** at the large table near the MCHL front counter. Just look for the bright blue flag and drop by anytime for tech help.

Bookings are needed for the **VR career experience sessions, which will be held 25–27 November** and can be reserved online through Digital Inclusion Alliance Aotearoa.

View the full story online by visiting:

<https://www.mchl.co.nz/your-mchl/latest-news/2024/2025/need-help-meet-your-digi-coach>



## Community Libraries

Across the Manawātū District, a network of locally run community libraries help bring reading and entertainment closer to home.

The MCHL team visits libraries in **Apiti, Himatangi, Kimbolton, Pohangina, Rongotea, and Tangimoana**, delivering a rotating selection of books, DVDs, and other resources so residents can easily borrow items without traveling far.

These community libraries are supported by dedicated local volunteers who bridge the gap for people by offering great stories and helpful resources. Opening hours vary by location, so visit the MCHL website for full details on times and locations.

For more info visit:

<https://www.mchl.co.nz/services/manawatu-community-libraries>



## Play Along the Way

Manawātū Community Hub Libraries are joining **Sport Manawātū's Play Along the Way** event on **November 19, 4:30–6:30pm** along the **Makino Pathway (Skatepark)** in Feilding!

Enjoy a fun evening of free activities for all ages, including chalking the pathway, mini golf, inflatables, music, and fire hose challenges. The MCHL van and play trailer will be there with fun play equipment and games for everyone.

Don't miss this chance to get active, try something new, and have fun with the whole community!



## Bringing the Library to Your Doorstep

Homelink is a home delivery service for residents unable to visit the library due to age, disability, illness, or other factors. Volunteers deliver a personalised selection of books, DVDs, games, audiobooks, magazines, and puzzles every two weeks. All at no cost to urban Feilding residents and four local rest homes. Homelink aims to break down barriers and keep the community connected.

To register visit the MCHL website or contact us.

<https://www.mchl.co.nz/services/homelink>



## Tracing Family Roots

Every **Wednesday morning** at Te Āhuru Mōwai, the Feilding branch of the **New Zealand Society of Genealogists (NZSG)** offers friendly help for anyone wanting to explore their family history. From **10am to 12pm**, volunteers guide people in researching whakapapa, building family trees, and using archives, microfiche, genealogy books, and online databases like Ancestry Library Edition, Find My Past, and FamilySearch.

Whether you are a beginner or an experienced researcher, NZSG members provide support and expertise to help uncover your past, one name, photo, or record at a time.

View the full story online by visiting:

<https://www.mchl.co.nz/your-mchl/latest-news/2024/2025/tracing-family-roots>





*Louis La'Trec, a friendly greyhound from Canine Pet Friends, is available to read to as part of the Paws for Reading programme at the community hub.*

## Paws Up for Reading!

With his long nose, soft brown eyes, and gentle nature, Louis La'Trec is the perfect reading buddy. This six-and-a-half-year-old greyhound loves a good story almost as much as he loves a nap and with around 20 hours of sleep a day, he's a professional at relaxing.

Louis lives with his owner, Annette Beasley, a long-time volunteer with Canine Pet Friends Therapy Dogs. Together, they are part of the Paws for Reading programme with Manawatū Community Hub Libraries, helping young readers build confidence in a calm, supportive setting. **Every Monday afternoon from 3:30pm to 4:30pm during term four, children can enjoy a free, 15-minute, one-on-one reading session with Louis.**

He is gentle and affectionate, greyhounds like Louis are known for their speed. They can reach up to 70 km an hour though these days Louis is more of a couch potato than a racer. He prefers soft couches to kennels and is so quiet that Annette has only heard him bark once. When he's happy, his mouth makes a gentle chattering sound, a bit like a cat's purr.

But what makes Louis truly special is his soothing, patient presence. He never interrupts, corrects, or judges no matter how a child reads. For young readers, that means they can take their time, sound out words, and read stories without pressure. His nature helps children relax, his kind eyes encourage them to keep going, and his quiet company turns

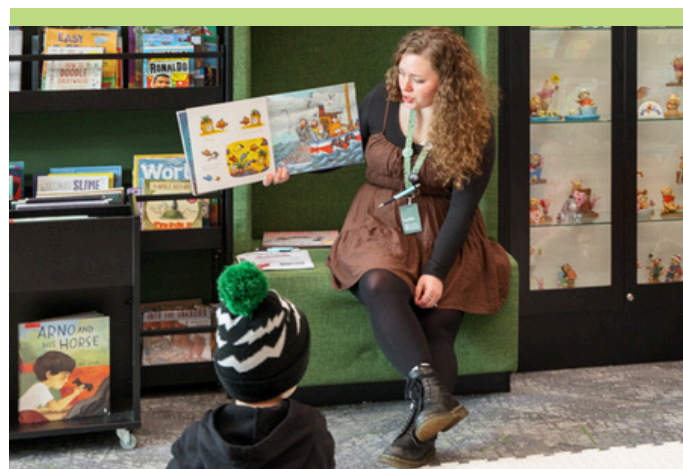
reading practice into a moment of calm and joy. One Research shows that reading to dogs can help reduce nervousness and self-consciousness. It motivates speech and helps children develop a lifelong love of reading because dogs like Louis make learning feel safe, warm, fun and furry friendly.

**To book your spot, email:**

[mchl.bookings@mdc.govt.nz](mailto:mchl.bookings@mdc.govt.nz)  
or call 06 323 5373.



**For more info visit:** <https://www.mchl.co.nz/whats-on/childrens-activities/paws-for-reading>



## Story Sparklers (Under 5's)

Friday mornings from 10am to 10:30am  
during the school term in the library.

*Thank you for reading!*